



Kegel Challenge Series - BROADWAY V2 - 4737



Oil Pattern Distance: **37 Feet**
 Forward Oil Total: **15.7 mL**
 Forward Boards Crossed: **314 Boards**

Reverse Brush Drop: **36 Feet**
 Reverse Oil Total: **10.75 mL**
 Reverse Boards Crossed: **215 Boards**

Oil Per Board: **50 uL**
 Volume Oil Total: **26.45 mL**
 Total Boards Crossed: **529 Boards**

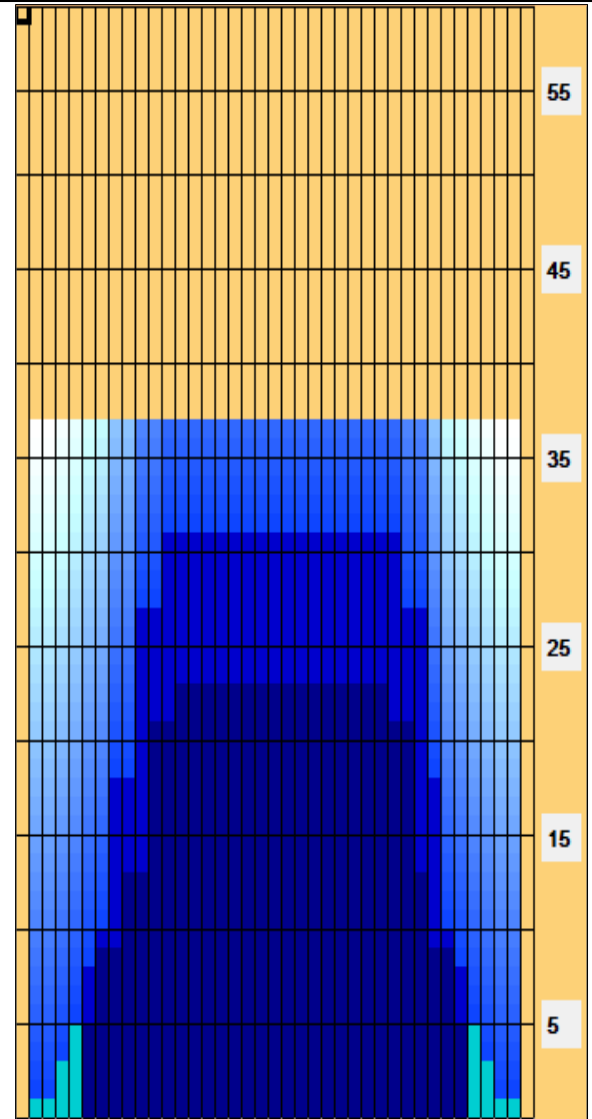
Start	Stop	Loads	Speed	Crossed	Start	End	Feet	T.Oil
1	2L 2R	2	14	74	0.0	1.9	1.9	3700
2	4L 4R	1	14	33	1.9	3.8	1.9	1650
3	5L 5R	1	14	31	3.8	5.7	1.9	1550
4	7L 7R	2	14	54	5.7	9.6	3.9	2700
5	9L 9R	2	14	46	9.6	13.5	3.9	2300
6	11L 10R	3	18	60	13.5	21.1	7.6	3000
7	13L 12R	1	18	16	21.1	23.6	2.5	800
8	2L 2R	0	22	0	23.6	31.0	7.4	0
9	2L 2R	0	26	0	31.0	37.0	6.0	0

Conditioner: Type In or Select One
 TransferType: Type In or Select One

Forward
 Reverse
 More

Start	Stop	Loads	Speed	Crossed	Start	End	Feet	T.Oil
1	2L 2R	0	30	0	37.0	31.0	-6.0	0
2	12L 11R	1	26	18	31.0	27.4	-3.6	900
3	10L 9R	3	22	66	27.4	18.1	-9.3	3300
4	8L 8R	3	18	75	18.1	10.5	-7.6	3750
5	7L 7R	1	18	27	10.5	8.0	-2.5	1350
6	6L 6R	1	18	29	8.0	5.5	-2.5	1450
7	2L 2R	0	14	0	5.5	0.0	-5.5	0

Forward
 Reverse
 More



Item	3L-7L:18L-18R	8L-12L:18L-18R	13L-17L:18L-18R	18L-18R:17R-13R	18L-18R:12R-8R	18L-18R:7R-3R
Description	Outside Track:Middle	Middle Track:Middle	Inside Track:Middle	Middle: Inside Track	Middle:Middle Track	Middle:Outside Track
Track Zone Ratio	4.77	1.33	1	1	1.21	4.77

