



Wright State Raiders Bowling



www.raidersbowling.com

Providing today's collegiate athlete with the tools for a successful tomorrow.

ABOUT OUR TEAM

In 2019-20, Wright State fielded 2 men's and 2 women's teams. Our women's program is continually ranked in the Top 15 nationally and our men's program in the Top 20. In 2019-20, our women's team won four tournaments and they were runners up five times. Our men's team won four tournaments and finished runner-up at two other tournaments. We bowl in more competitions than the vast majority of collegiate programs, so there is plenty of opportunity to participate in the collegiate bowling experience.

WHAT WE ARE ABOUT

We recognize that our bowlers attend Wright State University as a student first and a bowling athlete second. Therefore, academics always come first. Learning to prioritize activities and making good life choices is an important part of the college maturation process. We strive to create a support network to aid academic success through relationships forged and experiences gained with the bowling program.

On the lanes, we strive to coach each bowler to reach his or her maximum ability. We compete at the highest collegiate level. The demands at this level require our student athletes to be at their best – both mentally and physically. We strive to teach all asp

aspects of the game to help our bowlers reach their personal best. The greatest compliment to us would be for our bowlers to become successful coaches using the knowledge they gained during their collegiate bowling experience at Wright State.



BEAVER-VU BOWL



PRACTICES

We practice 3 nights a week at three different locations (Beaver-Vu Bowl, Capri Lanes, and Woodman Lanes). All practices are conducted on sport shots.

WHERE WE BOWL

We bowl one of the most competitive schedules in the country. In 2019-20, Wright State bowled tournaments in Ohio, Indiana, Michigan, Illinois, Wisconsin, Pennsylvania, and Tennessee. Below is our 2019-20 tournament schedule. This provides you with an idea of the frequency and location of tournaments.

TRAVEL

In general, if a tournament location is less than 3 hours by car we caravan as a team. If more than 3 hours, we rent vans and travel as a team.

FUNDRAISING

Fundraising is an important activity to offset the expenses of entry fees and travel. Typical Fundraising activities include:

- Raider Classic (our tournament)
- Raider Collegiate Challenge (HS tournament)
- Flat screen TV/Bowling Ball Raffle

2019-20 Tournaments

Sep 21-22	UNOH Racer Classic	Lima, OH
Sep 28-29	Ball St. Cardinal Baker Classic	Muncie, IN
Oct 12-13	Pikeville Orange & Black	Beavercreek, OH
Oct 26-27	Heartland Conf 1 & 2	Canton, MI
Nov 9-10	Wright State Raider Classic	Dayton, OH
Nov 16	Bowling Green Falcon Classic	Rossford, OH
Nov 23	University of Toledo	Toledo, OH
Nov 30-31	Team Match Games*	Fairview Hts. IL
Dec 27-28	Keystone Quaker Classic*	Allentown, PA
Dec 29-30	Lehigh Valley Collegiate Classic*	Allentown, PA
Jan 11-12	Buckeye Classic	Columbus, OH
Jan 18-19	Kegel Midwest Collegiate Classic*	Addison, IL
Jan 25-26	Heartland Conf 3 and 4	Pittsburgh, PA
Feb 15-16	Hoosier Classic*	Indianapolis, IN
Feb 23	Heartland Conf Finals	Fort Wayne, IN
Mar 14-15	USBC Sectional Qualifier	TBD
Mar 28-29	Collegiate Club Nationals	Anderson, IN
Apr 15-18	Intercollegiate Team Nationals	Wyoming, MI

* Tier 1

COACHING STAFF



Head Coach

Jeff Fleck

NCBCA 2015-2016 Kerm Helmer

Women's Coach of the Year

Cell/Txt: 937-272-4480

jeff.fleck@sbcglobal.net



Women's Coach

Colleen Hines

Cell/Txt: 937-902-0311

Hines.86@wright.edu



Women's Coach

Leslie Campbell

Cell/Txt: 513-739-7447

Campbell.377@wright.edu



Men's Coach

Dean Reynolds

Cell/Txt: 937-631-1184

dean.reynolds56@yahoo.com

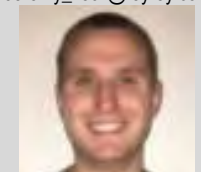


Men's Coach

Jeremy Fleck

Cell/Txt: 937-271-7627

Jeremy_fleck@reyrey.com

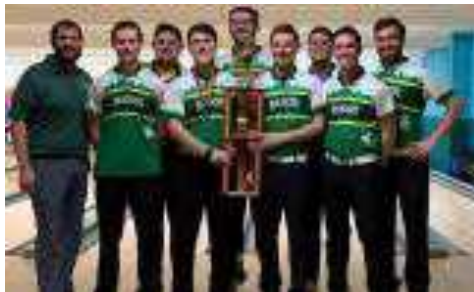


Mens' Coach

Brandon Weiker

Cell/Txt: 419-680-0575

weikerb@yahoo.com



National Qualifiers: 2011, 2012

Heartland Conf Champs: 2009, 2011, 2012, 2015

2019 Collegebowling.com Power Rank: 19th

2012 Smyrna, TN Sectional: Champions!

2018 Club Nationals: 2nd Place



National Qualifiers: 2009, 10, 12, 13, 15, 16, 17

Heartland Conference Champions: 2012

2019 Collegebowling.com Power Rank: 12th

2013 Nationals: 3rd Place

2015 & 2019 Club Nationals: Champions!

MEN

WOMEN

ABOUT WRIGHT STATE UNIVERSITY

Wright State University is a public research university in Dayton, Ohio with nearly 18,000 students. Offering more than 230 degree programs, the university is made up of eight colleges, three schools, and a branch campus in Celina, Ohio. Named for the Wright brothers, Wright State University offers an exceptional, affordable education. Visit www.wright.edu for further information.



UNDERGRADUATE ADMISSIONS

<http://www.wright.edu/admissions/>
(937)-775-5700 or toll-free 1-800-247-1770

TUITION AND FEES

www.wright.edu/admissions/dollars/fees.html
2020-21 Full-Time Tuition \$9,962 (resident)
(\$4,981 per semester)

Freshmen are not required to live on campus.
Note: In-state tuition reciprocity agreement is in place with over 25 Indiana counties.

SCHEDULE A CAMPUS TOUR

www.wright.edu/admissions/visit/

Note: Schedule a campus tour for a Wednesday, Thursday or Friday afternoon at 2:00 pm and let us know you are coming. After your tour, we will meet you and discuss details of the Wright State Bowling Program. Bring your bowling equipment.

APPLY ON-LINE

www.wright.edu/admissions/apply/

FINANCIAL AID

www.wright.edu/raiderconnect/financial-aid
(937) 775-5721 or toll-free 1-877-978-3243

SCHOLARSHIPS

www.wright.edu/financialaid/scholarships/first-year-undergraduate.html
(937) 775-5721 or toll-free 1-877-978-3243

Check out the academic performance scholarship calculator!

HOUSING

www.wright.edu/admissions/housing/

CAMPUS BOOKSTORE

<http://wright.bncollege.com/webapp/wcs/stores/servlet/BNCBHomePage?storeId=30557&catalogId=10001>

Wright State's ACT code: 3295

Wright State's SAT code: 1179

MAJORS

Accountancy, BSB
Acting, BFA
African and African American Studies, BA
Anthropology, BA
Art History, BA
Art, BA
Art, BFA
Athletic Training, BS
Biochemistry and Molecular Biology, BS
Biological Sciences, BA
Biological Sciences, BS
Biomedical Engineering, BSBE
Business Economics, BSB
Career, Technical and Adult Education, BSEd
Chemistry, BA
Chemistry, BS
Classical Languages and Cultures, BA
Clinical Laboratory Science, BSCLS
Communication Studies, BA
Communication, Mass Communication, BA
Computer Engineering, BSCE
Computer Science, BACS
Computer Science, BSCS
Crime and Justice Studies, BA
Dance, BFA
Design/Technology, BFA
Dual Major in Physics and Mathematics, BS
Dual Major in Statistics, BS
Early Childhood Education, BSEd
Earth and Environmental Sciences, BA
Earth and Environmental Sciences, BS
Economics, BA
Electrical & Computer Engineering Tech, BSECT
Electrical Engineering, BSEE
English, BA
Entrepreneurship, BSB
Finance, BSB
Financial Services, BSB
French, BA
General Business, BSB
Geography, BA
Geography, BS
German, BA
Greek, BA
Health & Physical Education, BSEd
History, BA
Human Resource Management, BSB
Industrial and Systems Engineering, BSISE
Integrated Science Studies, BS
International Business, BSB
International Studies, BA
Latin, BA
Liberal Studies, BA
Management Info Systems, BSB
Management, BSB
Marketing, BSB
Materials Science and Engineering, BSMSE
Mathematics, BA
Mathematics, BS
Mechanical Engineering, BSME
Medical Laboratory Science, BS
Middle Childhood Education, BSEd
Motion Pictures, BA
Motion Pictures, BFA
Music Education, BM
Music History and Literature, BM
Music, BA
Neuroscience, BS
Nursing, BSN
Nursing, BSN - Accelerated Option
Organizational Leadership, BS
Performance, BM
Philosophy, BA
Physics, BA
Physics, BS
Political Science, BA
Psychology, BA
Psychology, BS
Public Health Education, BSEd
Public Health, BA
Public Health, BS
Rehabilitation Services, BS
Religion, BA
Selected Studies, BA
Selected Studies, BFA
Sign Language Interpreting, BS
Social Science Education, BA
Social Work, BA
Sociology, BA
Spanish, BA
Sports Science, BSEd
Statistics, BS
Supply Chain Management, BSB
Technical and Applied Studies, BTAS
Theatre Studies, BA
Urban Affairs, BA
Urban Affairs, BS
Wellness Studies, BSEd
Women, Gender, and Sexuality Studies, BA

Subject to change. See <http://www.wright.edu/undergraduate-admissions/academics> for the most current listing of majors and minors

Reciprocal Agreement with Indiana Counties (In-state Tuition rates):

Adams, Allen, Blackford, Clark, Dearborn, Decatur, DeKalb, Delaware, Fayette, Floyd, Franklin, Harrison, Henry, Jay, Jefferson, Jennings, Noble, Ohio, Randolph, Ripley, Rush, Scott, Steuben, Switzerland, Union, Washington, Wayne, Wells